

first time ever

a computer assisted semen analyser
that includes You...

CASA & You

introducing Expert Mode

where the *technology*
helps you go beyond *technology*

World's every CASA faces technology limitations as microscopic images are 2 dimensional, there are variations in staining, setup constraints etc. SpermSoft overcomes all these limitations by its Expert Mode where computer truly assists You by presenting all the data and let you use your expertise and record your interpretation with ease.



patent pending technology


world's most
comprehensive CASA

SpermSoft is par image processing. It's not just a software but a complete stand-alone system that will surely be a backbone of your andrology lab...

SpermSoft is built using **latest hardware technology** and talking about software, **widest range of tests** is covered in SpermSoft.

Soft copy reports is one of the unique features of SpermSoft which includes **field images, videos & data analytics** like **comparisons** with previous findings, with WHO parameters etc.

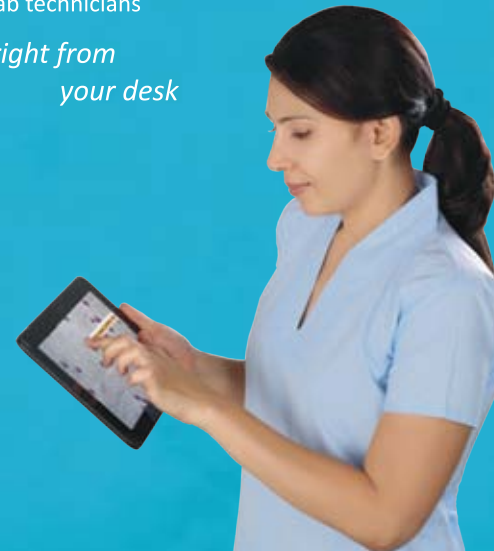


now stay connected
through wi-fi 

SpermSoft comes with
wi-fi connected tablet,

so you can monitor or give
your expert input to
lab technicians

right from
your desk



a  Sperm Processor product...

SpermSoft is a product developed by Sperm Processor, a renowned name in the field having vast presence in global market.

Our **subject expertise** enabled us to come up with a CASA that has every feature thoughtfully designed considering every minute detail and making it the most **practical CASA.**

We serve a wide range of products for lab andrology right from SFT Kits, instruments, accessories, plasticwares & disposables, hands-on training to complete Lab Setup...

You can thus always be assured of uninterrupted availability of all **supportive kits & accessories** required for CASA and be assured of quality.



sperm soft
CASA & You



www.spermsoft.com

SpermSoft

CASA & You

SpermSoft is developed with a bunch of exciting features so that you can work with **ease & convenience** and be always **confident** about the results



AndroChem
Analyser
integrated bio-chem analyser



add-on tablet support



image & video reports



traceability with bar coding



ease of touch screen

the stand-alone system comes with

- negative phase contrast microscope & all accessories
- USB 3.0 CCD Camera
- 23" touch screen all-in-one computer with stylus
- barcode reader & printer
- 10" tablet - windows OS
- colour inkjet printer
- androchem analyser - optional (with R32 cable)

widest range of tests

	Expert Mode	Auto Mode	Expert Mode	Auto Mode
Routine Semen Analysis	✓	✓	DNA Fragmentation	✓
Morphology	✓	✓	Leukocytes	✓
Vitality	✓	✓	Antisperm - Antibody	NA
HOS	✓	NA	α - Glycosidase	✓
Nuclear Protein Assay	✓	✓	Fructose	NA
			Zinc	NA